

# PRODUCT INFORMATION DOCUMENT

## WARRANTY

The intellectual property applied in the development of this product is the sole property of Macphie Ltd. and as such this specification may not be disclosed to a third party without the prior written agreement from the Quality Department of Macphie.

This product conforms to existing UK/EU statutory regulations and codes of practice. Where stated Macphie will try to maintain suppliers and country of origins for the raw materials used in the formulation, however we reserve the right to change suppliers and the source to meet the demands of quality, price and availability in order to maintain continuity of supply to our customers. This specification was correct at the time of publishing.

Product Information Documents are always available from Macphie upon request from [quality.standards@macphie.com](mailto:quality.standards@macphie.com)

Should no feedback be provided to Macphie within 5 working days, customer acceptance of this PID will be assumed.

## 1. PRODUCT DESCRIPTION

### 1.1 Product Description

A complete mix containing fruit chips, which requires only the addition of water and vegetable oil to produce delicious Apple and Cinnamon loaf cakes, muffins and tray bakes with an incredibly moist crumb.

### 1.2 Colour/Appearance

Beige speckled powder conforming to previously accepted material.

### 1.3 Texture

Crumble type product, with particulates

### 1.4 Flavour

Characteristic apple and cinnamon flavour when baked

### 1.5 Product Attributes

### Acceptable Levels

Performance / Organoleptic

Acceptable

## 2. INGREDIENT LISTING

2.1 The following gives the U.K. Ingredient Declaration for inclusion in customers finished product "Ingredient Listing":-

Ingredient	Source	E No	Country of Origin	Broadband %
Sugar	Sugar Beet		France	30-50%
<b>Wheat</b> Flour (with Calcium, Iron, Niacin, Thiamin)	Wheat		China, Germany, India, Sweden, USA, UK	30-50%
Apple and Cinnamon Fruit Chips (8%) [Fruit (Apple Juice, Apple Puree), Sucrose, Glucose Syrup, Gelling Agent (Pectin), Lemon Juice from Concentrates, Flavouring, Antioxidant (Ascorbic acid), Cinnamon]	Corn, Fruit, Beet, Citrus Fruits, Cinnamon	E330, E440	China, Germany, Argentina, Austria, Brazil, France, Greece, Hungary, Lithuania, Netherlands, Poland, Spain, Turkey	<10%
Vegetable Oil	Rapeseed		Australia, Ukraine, EU (28)	<10%
Dried Whole <b>Egg</b>	Hen's Eggs		Germany, France, Italy, Netherlands, Poland, Portugal, Spain	<10%
Spices				<5%
Cinnamon (Cassia)			Indonesia, Spain	
Ground Mixed Spice			China, India, Afghanistan, Brazil, Canada, Egypt, Indonesia, Madagascar, Morocco, Spain, UK	
Modified Starch	Potato, Waxy Maize	E1404, E1422	Netherlands	<5%
<b>Wheat</b> Starch	Wheat		Belgium	<5%
Raising Agents				<5%
Disodium diphosphate		E450(i)	USA	
Sodium bicarbonate		E500(ii)	UK	
Potassium bicarbonate		E501(ii)	China, Germany, France, Netherlands, UK	
Emulsifiers				<5%
Mono- and diglycerides of fatty acids	Palm Oil	E471	Malaysia, Papua New Guinea, Colombia, Indonesia	
Propane-1,2-diol esters of fatty acids	Palm Oil	E477	Denmark, Indonesia, Malaysia	
Sodium stearoyl-2-lactylate	Palm	E481	Malaysia, Denmark, Indonesia	
Dextrose	Wheat*		Belgium	<5%
<b>Wheat</b> Gluten	Wheat		Germany	<5%
Stabiliser				<5%
Xanthan gum	Soya Bean, Maize	E415	China	

For Allergy Advice, including cereals containing gluten, see ingredients in **bold** in ingredient listing above.

For any products containing palm oil; please see despatch notes/invoices for RSPO palm oil sustainability status.

\*In accordance with regulation (EU) No 1169/2011 Annex II, wheat based glucose syrups, including dextrose, are exempt from allergen labelling. Our supplier has confirmed <20mg/kg of gluten in the material. We do not however conduct internal gluten testing of our products.

**3. NUTRITION INFORMATION****3.1 TYPICAL VALUES PER 100g OF PRODUCT:-**

Nutrient	Amount	Units
Energy (kJ)	1765	kJ
Energy (kcal)	422	kcal
Fat	11.1	g
of which saturates	2.1	g
Carbohydrates	73.3	g
of which sugars	43.2	g
Protein	6.4	g
Salt	0.6	g

Source: Analysis (supplier) /Calculation (McCance & Widdowson)

Uncontrolled  
COPY

**4. ALLERGEN INFORMATION**

Used on site	Used on line		RECIPE CONTAINS:
✓	✓	Cereals containing Gluten (wheat, rye, barley, spelt, oats, kamut or their hybridised strains) and products thereof	Yes
✓	✓	Wheat and products thereof	Yes
✓	✓	Rye and products thereof	No
✓	✓	Barley and products thereof	No
		Spelt and products thereof	No
✓	✓	Oats and products thereof	No
		Kamut and products thereof	No
		Crustaceans and products thereof	No
		Molluscs and products thereof	No
✓	✓	Eggs and products thereof	Yes
✓		Fish and products thereof	No
		Peanuts and products thereof	No
✓	✓	Soybeans and products thereof	No
✓	✓	Milk and milk products thereof (including lactose)	No
		Nuts (Almond, Hazelnut, Walnut, Cashew, Pecan nut, Brazil nut, Pistachio nut, Macadamia nut and Queensland nut) and products thereof	No
✓		Celery and products thereof	No
		Mustard and products thereof	No
		Sesame seeds and products thereof	No
		Lupin and products thereof	No
✓	✓	Sulphur dioxide and sulphites (E220-E228) at concentrations of more than 10 mg/kg or 10 mg/litre expressed as SO <sub>2</sub>	No

“This product information document has been prepared in accordance with the labelling requirements of Directive 2003/89/EC and amendments thereof. The information detailed within section 4 outlines the physical presence of allergens (by addition) in accordance with Annex IIIa of the aforementioned directive alongside EU Food Information for Consumers Regulation No. 1169/2011. It should be noted that as no threshold values exist for the above listed allergens (allergens used on line), with the exception of Sulphites, an absolute guarantee of their absence cannot be given. Therefore, materials indicated as ‘used on line’ should be considered under alibi labelling on finished products.”

Uncontrolled  
COPY

**4.2 SUPPLEMENTARY DATA**

	CONTAINS:
Animal products (other than those listed above) and products thereof	No
Maize and products thereof	Yes
Colours – non natural	No
Colours – natural	No
Flavours – non natural	No
Flavours - natural	Yes
GM Materials	No
	SUITABLE FOR:
Vegetarians	Yes
Vegans	No

Information contained within this document is based exclusively on the product as sold. Full consideration should therefore be given to product make-up/finished product standard.

**5. STORAGE CONDITIONS AND SHELF LIFE**

5.1 Unopened			
Product Code	Pack Size	Shelf Life	
10000127	12.5kg Bag	<b>Total (sealed)</b>	9 months from date of manufacture. Clearly marked with "Best Before" date.
<b>Storage conditions-</b> Store in cool, dry hygienic environment (<20°C)			

5.2 Opened	
<b>Shelf Life</b>	Until end of shelf life, provided it is stored in closed unit
<b>Storage conditions</b>	Store in hygienic environment (<20°C)

5.3 Freeze Thaw Stability	
Freeze thaw stable in application only, not in pack.	

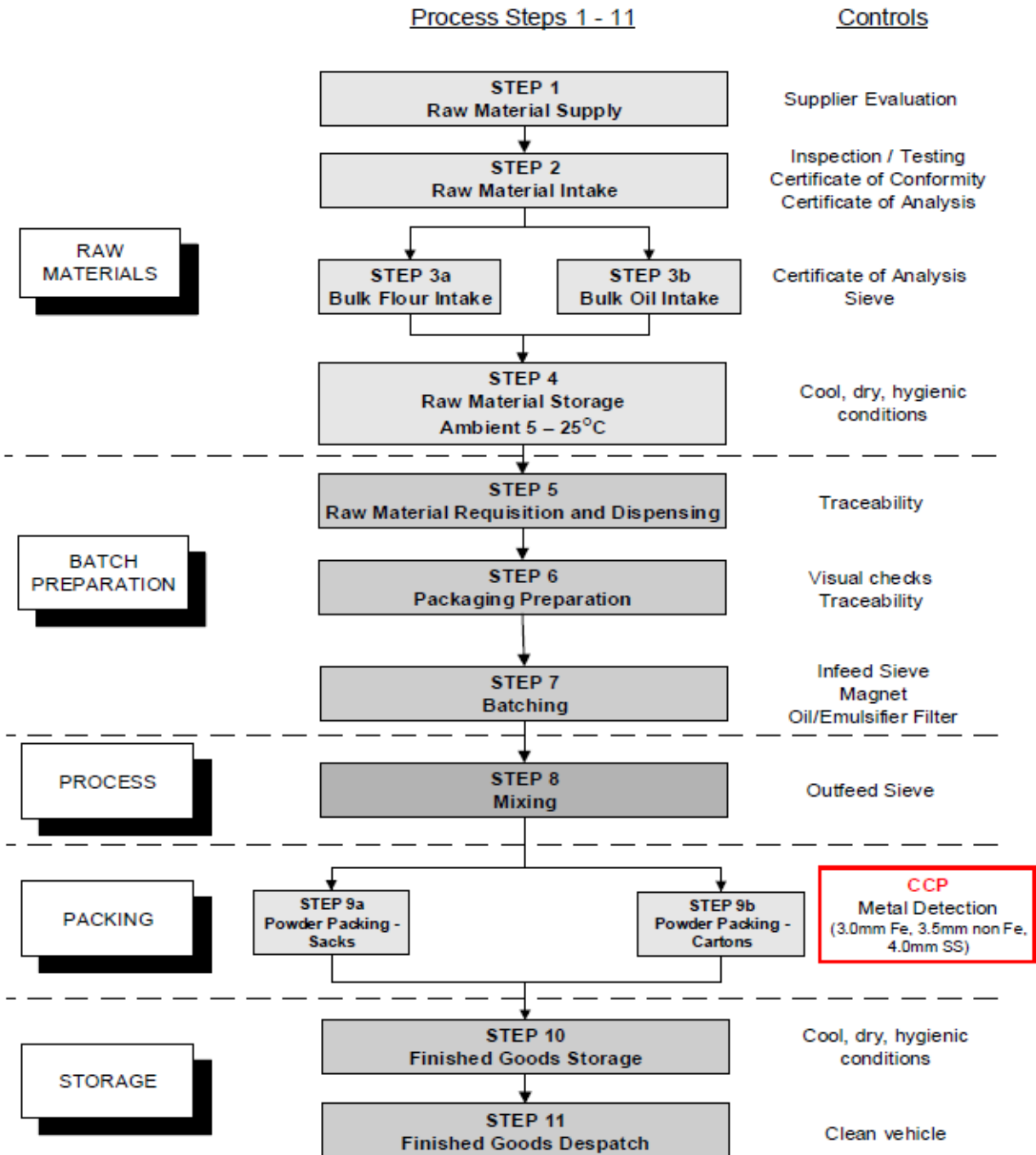
5.4 Recommended Make Up Instructions/Use	
See product label and/or Technical Information Sheet. Available from customer services at <a href="mailto:customer.service@macphie.com">customer.service@macphie.com</a>	

**6. FOOD SAFETY DATA**
**6.1 Microbiological (typical)**

Test	Standard
E. Coli	< 100 cfu/g
S. Aureus	< 100 cfu/g

Uncontrolled  
COPY

7. HACCP FLOW CHART



Uncontrolled  
COPY

**8. PACKAGING**

<b>8.1</b>	<b>Packaging</b>		
	<b>Pack Size:</b>	<b>12.5kg Bag</b>	
	<b>Primary Pack</b>	<b>Red Easy Open Small Sack</b>	<b>Weights (kg)</b>
		Easy to open paper sack with multi-ply walls with food grade blue polythene inner (30 µm)	0.140
	<b>Secondary Pack</b>	N/A	N/A
	<b>Tertiary Pack</b>	Pallet cover: polythene	0.064
		Pallet stretchwrap: polythene	0.450
		Pallet layerboard: paper	0.379
		Pallet	27
<b>8.2</b>	<b>Sealing</b>	Heat seal	
<b>8.3</b>	<b>Dimensions of Unit (length x height)</b>	427mm x 760mm	
<b>8.4</b>	<b>Palletisation (dimensions of pallet)</b>		
	<b>Pallet Configuration</b>	7 sacks/layer x 7 layers + 1 = 50 units/pallet	
	<b>Dimensions of Pallet</b>	1200mm x 1000mm	
<b>8.5</b>	<b>Labelling</b>	Each sack is labelled with product name, product code, product weight (minimum weight), best before date (DD/MMM/YY), system-generated 6-digit lot/batch No, and sequential unit number.	

Uncontrolled  
COPY

**MSDS**

<b>1. PRODUCT &amp; COMPANY IDENTIFICATION</b>		
1.1	Product name	APPLE & CINNAMON SENSATION®
1.2	Product Codes	10000127
1.3	Description	A complete mix containing fruit chips, which requires only the addition of water and vegetable oil to produce delicious Apple and Cinnamon loaf cakes, muffins and tray bakes with an incredibly moist crumb.
1.4	Manufacturers Name, Address & tel no.	Macphie Ltd, Glenbervie, Stonehaven, AB39 3YG. Tel: 01569 740641
<b>2. COMPOSITION/INFORMATION ON INGREDIENTS</b>		
2.1	Contains	See section 2 of main document
<b>3. HAZARD IDENTIFICATION</b>		
Contains substances, which may cause contact sensitisation, allergic or irritant response. It may also cause irritation of the respiratory tract, e.g. rhinitis. Prolonged skin contact may cause contact dermatitis and/or minor irritation. The product is combustible and when handling fine powdered products there is a risk of dust explosions.		
<b>4. FIRST AID MEASURES</b>		
4.1	Inhalation	Remove from exposure and into the fresh air. If symptoms of irritation or sensitisation occur (shortness of breath, wheezing or laboured coughing) seek medical attention.
4.2	Ingestion	Not applicable.
4.3	Skin contact	Wash off with soapy water. If skin irritation develops seek medical advice.
4.4	Eye contact	Rinse immediately with plenty of water. If irritation persists seek medical advice.
<b>5. FIRE/EXPLOSION HAZARD</b>		
If concentrations of dust form there is a risk of explosion. Under certain conditions dust clouds can ignite.		
5.1	Suitable fire extinguishing media	Water, Foam, Dry Chemical, Carbon Dioxide
5.2	Protection against fire	Good housekeeping to avoid the accumulation of dust. High concentrations of dust are potentially explosive. Avoid ignition sources.
<b>6. ACCIDENTAL RELEASE MEASURES</b>		
6.1	Methods of cleaning/absorption	Clean up by dustless means, for instance, by a vacuum equipped with a high efficiency filter. Avoid brushing, sweeping or air hoses. Dilute remainder with plenty of water. Never use a high pressure water jet.
6.2	Personal precautions	See section 8. Exposure controls/personal protection
6.3	Environmental precautions	The method of disposal should be in accordance with current local authority regulations.
<b>7. HANDLING AND STORAGE</b>		
7.1	Handling	Avoid dust formation and keep the working area free from accumulated dust and ignition sources. Use engineering controls to minimise dust emission. Local Exhaust Ventilation (LEV) or enclosure of processes should be used where possible.
7.2	Storage	Store in original packaging. Keep cool and dry and ensure product is stored in accordance with Food Safety Act.

Uncontrolled Copy



<b>8.</b>	<b>EXPOSURE CONTROLS/PERSONAL PROTECTION</b>	
<b>8.1</b>	General Precautions	Handle in accordance with good occupational hygiene and safety practices. Avoid contact with skin and eyes. Avoid unnecessary breathing in of dust. Reduce exposure to dust (see Section 7, Handling and storage).
	a) Segregate dusty processes to prevent exposure of employees not involved in handling dusty ingredients. b) Change work practices to minimise the generation of airborne dust, for instance: <ul style="list-style-type: none"> <li>• Improve care and attention to the prevention of spillages, especially around roll and pastry plants, sieves and mixers;</li> <li>• Avoid damage to packaging to prevent leaks;</li> <li>• Minimise the creation of airborne dust when folding/disposing of empty bags – e.g. roll bag up from the bottom whilst tipping;</li> <li>• Minimise the use of compressed air lines for cleaning. When an air jet is unavoidable, a combined air jet/vacuum device should be used.</li> <li>• Use vacuum cleaners for general cleaning. When shovels have to be used for larger volumes respiratory protective equipment should be worn. Brushing should be eliminated.</li> </ul>	
<b>8.2</b>	Ventilation	In accordance with LEV requirements as defined in COSHH 2002(as amended) legislation.
<b>8.3</b>	Respiratory Protection	Respirators with P3 filter.
<b>8.4</b>	Eye Protection	Safety goggles as required.
<b>8.5</b>	Skin Protection	Standard protective clothing (including gloves) and appropriate skin protection if required.

<b>9.</b>	<b>PHYSICAL &amp; CHEMICAL PROPERTIES</b>	
<b>9.1</b>	Form	Powder
<b>9.2</b>	Colour	Refer to section 1 of main document.
<b>9.3</b>	Odour	Free from off odours, as previous standard
<b>9.4</b>	Flammability	Product is combustible but does not constitute a particular fire hazard.

<b>10.</b>	<b>STABILITY &amp; REACTIVITY</b>	
	This material is stable under normal conditions of use.	
<b>10.1</b>	Conditions to avoid	None
<b>10.2</b>	Materials to avoid	None
<b>10.3</b>	Hazardous decomposition products	None

<b>11.</b>	<b>TOXICOLOGICAL INFORMATION</b>	
<b>11.1</b>	Inhalation	Allergies of the respiratory system may occur. Repeated exposure may cause sensitisation. Irritation of the respiratory system may occur.
<b>11.2</b>	Eye Irritation	Contact with eyes may cause irritation.
<b>11.3</b>	Skin Irritation	Prolonged and/or frequent contact may cause irritation and dermatitis
<b>11.4</b>	Ingestion	May cause adverse reaction when ingested by people who are allergic to wheat based products.

<b>12.</b>	<b>ECOLOGICAL INFORMATION</b>	
	The product should not be allowed to enter any watercourse.	

<b>13.</b>	<b>DISPOSAL CONSIDERATIONS</b>	
	Product not believed to be dangerous to the environment and so no special disposal method is required. However, the method of disposal should be in accordance with current local authority regulations.	

Uncontrolled  
COPY

14. TRANSPORT INFORMATION		
14.1	UN No.	N/A
14.2	Sea	N/A
14.3	Road/Rail	N/A
14.4	Air	N/A

15. REGULATORY INFORMATION	
	Not classified as dangerous

16. OTHER INFORMATION	
	Under the 2002 COSHH regulations (as amended) you are reminded that the user is under legal obligation to carry out a suitable and sufficient assessment as to the risks to health which this material may present under its actual condition of use.

The information contained throughout the document was correct at the time of publishing.

Uncontrolled  
COPY