

Changed Dec 04, 2025 12:52

Reviewed Dec 04, 2025 12:52

Erudus ID 2178e32bc4814d018abf77fee7ad8a4c

Version 1.1

Status Published

Et Voila Sri Lanken Vegetable Soup

Sri Lanken Vegetable Soup 4 X 1kg

PRODUCT DESCRIPTION

Sri Lanken Vegetable Soup

Brand	Et Voila Ltd
Manufacturer Product Code	EV108
Product Type	Food
Product Category	Other
Storage Type	Frozen
Erudus ID	2178e32bc4814d018abf77fee7ad8a4c
Specification Type	Generic

Inner Component GTIN	5060778192395
Manufacturer Component Code	EV108
Outer Case GTIN	15060778192392



INGREDIENTS

Ingredient Declaration

Water, Coconut cream, Tomato, Onion, Sweet potato, Red peppers, Red lentils, Vegetable oil, Vegetable stock(Water, Onion powder, Carrot juice powder, tomato powder, Herb (Lovage), Dried glucose syrup, Yeast extract, Salt, Sugar, Chicory extract, Rapeseed oil, Natural flavouring), Modified maize starch, Lime Juice, Garam masala (Coriander, Cassia, Ginger, Clove), Garlic granules, Cinnamon, Coriander leave, Turmeric Powder, Salt, Chilli powder.

ALLERGENS

Product Contains:

Celery/Celeriac	No	Mustard	No
Cereals Containing Gluten	No	Nuts (Tree)	No
Barley	No	Almond nuts	No
Oats	No	Brazil nuts	No
Rye	No	Cashew nuts	No
Wheat (including Spelt and Khorasan)	No	Hazelnuts	No
Crustacea	No	Macadamia (Queensland) nuts	No
Eggs	No	Pecan nuts	No
Fish	No	Pistachio nuts	No
Lupin	No	Walnuts	No
Milk	No	Peanuts	No
Molluscs	No	Sesame Seeds	No
		Soybeans	No
		Sulphur Dioxide and Sulphites	No

Additional Allergen Information

Allergens handled on site: Milk, Mustard, Soybeans, Cereal containing Gluten(Barley) and Sulphites.

SUPPLEMENTARY
INGREDIENT
INFORMATION

Palm Oil	No
GM Protein/DNA	No

ADDITIVES

Product Contains:

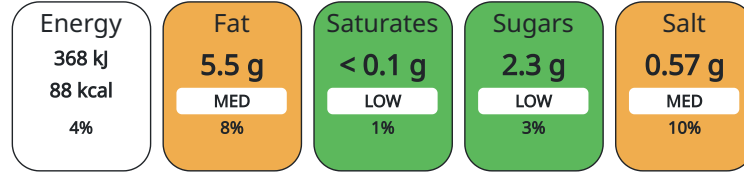
Artificial Preservatives	No
Artificial Sweeteners	No

DIET SUITABILITY

Vegan Diet	Suitable for	Vegetarian Diet	Suitable for
-------------------	--------------	------------------------	--------------

NUTRITIONAL
INFORMATION AS
SOLD

Each 100g/ml portion contains:



of your reference intake.

Typical values per 100g/ml : Energy 88kcal / 368kj

Nutrient	per 100g	RI per 100g	per 100g serving	RI per 100g serving
Energy (kJ)	368 kJ	4%	368	4%
Energy (kcal)	88 kcal	4%	88	4%
Fat	5.5 g	8%	5.5 g	8%
of which Saturates	< 0.1 g	1%	0.1 g	1%
of which Mono-unsaturates	< 0.1 g		0.1 g	
of which Polyunsaturates	< 0.1 g		0.1 g	
Carbohydrate	7.9 g	3%	7.9 g	3%
of which Sugars	2.3 g	3%	2.3 g	3%
Fibre	< 0.5 g		0.5 g	
Protein	1.8 g	4%	1.8 g	4%
Salt	0.57 g	10%	0.57 g	10%
Serving Size	100 g			

HANDLING &
STORAGE
INFORMATION

Directions For Use

Ensure product is pipping hot before consuming.

Storage Instructions

Frozen Storage. Once defrost, keep chilled and use within 14 days.

Storage Instructions After Opening

Once opened, keep chilled, use within 3 days and by the date shown on label.

Shelf Life from Time of Production	365 Days
Shelf Life From Opening	3 Days
Shelf Life Once Defrosted	14 Days

ACCREDITATIONS/
CERTIFICATIONS/
ASSURANCE
SCHEMES
ORIGIN

SALSA (Safe & Local Supplier Approval)	
Product Country of Origin	United Kingdom
Origin of the Primary Ingredient	Not Applicable

PRODUCT
CHARACTERISTICS

Standards Testing

Do you undertake trend analysis of microbiological results?	Yes	Is shelf life testing undertaken?	Yes
--	-----	--	-----

Microbiological Standards

Organism	Description	Frequency	Target	Maximum	Sample (g or ml)
Bacillus Cereus (cfu/g or ml)		Occasionally	<20	100	100
E. Coli (cfu/g or ml)		Occasionally	<10	100	100
Listeria SPP (cfu/g or ml)		Occasionally	<0	0	100
Salmonella (cfu/g or ml)		Occasionally	<0	0	100
Yeast (cfu/g or ml)		Occasionally	<100	500	100
Moulds (cfu/g or ml)		Occasionally	<100	500	100

Analytical Standards

Test	Description	Frequency	Target	Range	Sample (g or ml)
pH		Every Batch	<4.2	2.8 to 4.2	100

CONFIGURATION

Case Configuration

Inner Pack Configuration

Variable Inner Components in Outer Case	Yes
Total Quantity of Inner Components in Outer Case	4 Units
Is the Outer Case Splittable?	Yes

PRODUCT WEIGHTS

Inner Component

Inner Component Weight	1 kg
Inner Component Volume	4 ml
Net Drained Weight	1 kg

Outer Case

Outer Case Gross Weight	4.25 kg
Outer Case Net Weight	4 kg

PRODUCT DIMENSIONS

Inner Component

Inner Component Depth	200 mm
Inner Component Width	250 mm
Inner Component Height	5 mm

Outer Case

Outer Case Depth	350 mm
Outer Case Width	320 mm
Outer Case Height	68 mm

PALLET INFORMATION

Quantity of Cases Per Pallet Layer	6 Cases	Pallet Type	Euro Pallet
Quantity of Layers Per Pallet	25 Layers	Pallet Height	1.54 MTR
Quantity of Cases Per Pallet	150 Cases	Pallet Gross Weight	620 kg

PACKAGING

Inner Component Packaging

Type	Materials	Weight	Recycled Material %	Recyclable	Returnable	Composite
Bag	Plastic / PE (Polyethylene)	13 g				

Outer Case Packaging

Type	Materials	Weight	Recycled Material %	Recyclable	Returnable	Composite
Box	Paper/Cardboard / Cardboard	34 g		Yes	No	No
Shrink Wrap	Plastic	10 g				

OTHER INFORMATION CONTACT INFORMATION

Address

Et Voila Ltd
1st Floor Chancery Lane
DN22 6DF
Retford
Nottinghamshire
United Kingdom

roxanna@etvoila-fs.co.uk
07496118569

Technical

Roxana Ionescu
roxanna@etvoila-fs.co.uk
07496118569
Quality Manager

Commercial

Roxana Ionescu
qc@etvoila-fs.co.uk
07496118569
Factory manager

Complaints

Agnieszka
qa@etvoila-fs.co.uk
07496118569
Quality Technician

The information on the [Erudus System](#) has been supplied by the manufacturers of the products and, whilst the owners of the Erudus System take steps to ensure the information is regularly updated, they give no warranty and no guarantee that the information is accurate. Product information and ingredients may change, please always read product labels carefully in addition to using the information provided by Erudus.

We do not accept liability for any inaccuracies or incorrect information contained on this site.
Please visit <http://www.erudus.com/terms-and-conditions> for full terms and conditions.