

Supplier's Product Code : 1014231  
 Product Added : 19 January 2011  
 Last Updated by Supplier : 05 July 2022  
 erudus id : 638283ca3fc84640a94912f06731c5e7



The information on the **Erudus System** has been supplied by the manufacturers of the products and, whilst the owners of the Erudus System take steps to ensure the information is regularly updated, they give no warranty and no guarantee that the information is accurate. Product information and ingredients may change, please always read product labels carefully in addition to using the information provided by Erudus One.

We do not accept liability for any inaccuracies or incorrect information contained on this site. Please visit <http://www.erudus.com/terms-and-conditions> for full terms and conditions.

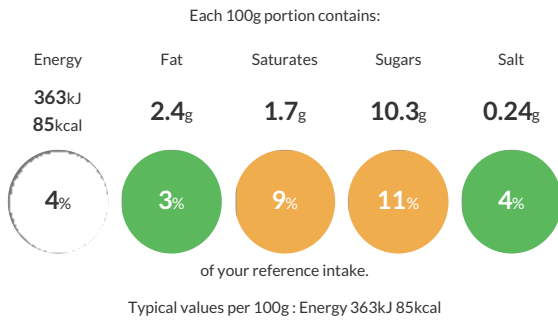
## Angel Delight Strawberry Flavour Dessert Mix 600g

Short Product Name:  
 Strawberry Flavour Dessert Mix

Strawberry flavour dessert mix

Traded Unit GTIN: 05000117922061 Internal GTIN: 5000354916786 Supplier: Premier Foods Suppliers Product Code: 1014231

### Reference Intake



### Nutritional Information

Typical Values	Per 100g
Energy	363kJ 85kCal
Carbohydrates	13.5g
of which sugars	10.3g
Fat	2.4g
of which saturates	1.7g
Fibre	<0.5g
Protein	2.9g
Salt	0.24g

### Allergy Information

Key: **Contains** **May Contain**

Does Not Contain Cereal/Gluten	Contains Milk	Does Not Contain Eggs	Does Not Contain Peanuts	Does Not Contain Nuts	Does Not Contain Crustaceans	Does Not Contain Mustard
Does Not Contain Fish	Does Not Contain Lupin	Does Not Contain Sesame	Does Not Contain Celery	Does Not Contain Soya	Does Not Contain Molluscs	Does Not Contain Sulphur Dioxide

#### Gluten Claim

Gluten content is less than 20ppm.

#### Allergen Statement

For allergens, see ingredients in bold.

### Ingredients

Sugar, Skimmed **MILK** Powder, Modified Starch, Maltodextrin, Palm Oil, Gelling Agents (Diphosphates, Sodium Phosphates), Emulsifiers (Propylene Glycol Esters of Fatty Acids, Lecithins), Lactose (**MILK**), **MILK** Proteins, Calcium Carbonate, Whey Powder (**MILK**), Anti-caking Agent (Silicon Dioxide), Colours (Beetroot Red, Carotenes), Flavouring.

### Dietary Information

Key: **Suitable for**

Suitable for Vegetarian	May not be suitable for Vegan	May not be suitable for Kosher	May not be suitable for Halal	Suitable for Coeliac
-------------------------	-------------------------------	--------------------------------	-------------------------------	----------------------