

PRODUCT INFORMATION DOCUMENT

WARRANTY

The intellectual property applied in the development of this product is the sole property of Macphie of Glenbervie Ltd. and as such this specification may not be disclosed to a third party without the prior written agreement from the Quality Department of Macphie.

This product conforms to existing UK/EU statutory regulations and codes of practice. Where stated Macphie will try to maintain suppliers and country of origins for the raw materials used in the formulation, however we reserve the right to change suppliers and the source to meet the demands of quality, price and availability in order to maintain continuity of supply to our customers. This specification was correct at the time of publishing.

Product Information Documents are always available from Macphie upon request from quality.standards@macphie.com

Should no feedback be provided to Macphie within 5 working days, customer acceptance of this PID will be assumed.

1. PRODUCT DESCRIPTION

- 1.1 Product Code
GP136
- 1.2 Product Description
A sweetened cream alternative made with vegetable oil and milk protein.
- 1.3 Colour/Appearance
Creamy-White liquid conforming to previously accepted material.
- 1.4 Texture
Liquid
- 1.5 Flavour
Clean, sweet flavour, conforming to previously accepted material.

1.6	<u>Product Attributes</u>	<u>Acceptable Levels</u>
	Performance / Organoleptic	Acceptable
	pH (ambient)	6.7 ± 0.3

2. INGREDIENT LISTING

2.1 The following gives the U.K. Ingredient Declaration for inclusion in customers finished product "Ingredient Listing":-

Ingredient	Source	E No	Country of Origin	Broadband %
Water			UK	30-50%
Hydrogenated Vegetable Oil	Palm Kernel		Germany, Malaysia, Papua New Guinea, Belgium, Brazil, Colombia, Indonesia, Thailand, New Britain	10-30%
Dextrose	Wheat*		Belgium	10-30%
Sugar	Sugar Cane, Sugar Beet		Malawi, Zambia, UK	<10%
Humectant				<5%
Glycerol	Rapeseed	E422	UK	
Milk Protein	Cow's Milk		Ireland, UK	<5%
Emulsifiers				<5%
Polysorbate 60	Palm	E435	Belgium, France	
Mono- and diglycerides of fatty acids	Palm	E471	Indonesia, Malaysia, Colombia, Papua New Guinea, UK	
Soya Lecithin	Soya Bean	E322	India, UK	
Stabilisers				<5%
Carboxymethyl cellulose		E466	USA	
Cellulose		E460	USA	
Methyl Cellulose	Wood Pulp	E461	Germany, USA, France	
Hydroxypropyl Methyl Cellulose	Wood Pulp	E464	Germany	
Acidity Regulators				<5%
Tri Sodium Citrate	Sugar Beet	E331	Belgium	
DiSodium Phosphate		E339 (ii)	Germany	
Salt			UK	<5%
Flavouring			UK	<5%
Colour				<5%
Beta-Carotene		E160a (i)	China, UK	

For Allergy Advice see ingredients in **bold** in ingredient listing above.

For any products containing palm oil; please see despatch notes/invoices for RSPO palm oil sustainability status.

*In accordance with regulation (EU) No 1169/2011 Annex II; wheat based glucose syrups, including dextrose, are exempt from allergen labelling. Our supplier has confirmed <20mg/kg of gluten in the material. We do not however conduct internal gluten testing of our products.

3. NUTRITION INFORMATION

3.1 TYPICAL VALUES PER 100g OF PRODUCT:-

Nutrient	Amount	Units
Energy (kJ)	1570	kJ
Energy (kcal)	375	kcal
Fat	25.7	g
of which saturates	24.6	g
Carbohydrates	33.2	g
of which sugars	30.1	g
Protein	0.6	g
Salt	0.4	g

Source: Analysis (supplier) /Calculation (McCance & Widdowson)

Uncontrolled
 Copy

4. ALLERGEN INFORMATION

Used on site	Used on line		RECIPE CONTAINS:
✓	✓	Cereals containing Gluten (wheat, rye, barley, spelt, oats, kamut or their hybridised strains) and products thereof	No
✓	✓	Wheat and products thereof	No
✓		Rye and products thereof	No
✓	✓	Barley and products thereof	No
		Spelt and products thereof	No
✓		Oats and products thereof	No
		Kamut and products thereof	No
		Crustaceans and products thereof	No
		Molluscs and products thereof	No
✓	✓	Eggs and products thereof	No
✓	✓	Fish and products thereof	No
		Peanuts and products thereof	No
✓	✓	Soybeans and products thereof	Yes
✓	✓	Milk and milk products thereof (including lactose)	Yes
		Nuts (Almond, Hazelnut, Walnut, Cashew, Pecan nut, Brazil nut, Pistachio nut, Macadamia nut and Queensland nut) and products thereof	No
✓	✓	Celery and products thereof	No
		Mustard and products thereof	No
		Sesame seeds and products thereof	No
		Lupin and products thereof	No
✓	✓	Sulphur dioxide and sulphites (E220-E228) at concentrations of more than 10 mg/kg or 10 mg/litre expressed as SO ₂	No

“This product information document has been prepared in accordance with the labelling requirements of Directive 2003/89/EC and amendments thereof. The information detailed within section 4 outlines the physical presence of allergens (by addition) in accordance with Annex IIIa of the aforementioned directive alongside EU Food Information for Consumers Regulation No. 1169/2011.”

*Uncontrolled
 COPY*

4.2 SUPPLEMENTARY DATA

	CONTAINS:
Animal products (other than those listed above) and products thereof	No
Maize and products thereof	Yes
Colours – non natural	Yes
Colours – natural	No
Flavours – non natural	Yes
Flavours - natural	Yes
GM Materials	No
	SUITABLE FOR:
Vegetarians	Yes
Vegans	No

Information contained within this document is based exclusively on the product as sold. Full consideration should therefore be given to product make-up/finished product standard.

5. STORAGE CONDITIONS AND SHELF LIFE

5.1 Unopened			
Pack Code	Pack Size	Shelf Life	
GP136/601	12 x 1Lt tray	Total (sealed)	9 months from date of manufacture. Clearly marked with "Best Before" date.
GP136/501	10Lt Box	Total (sealed)	7 months from date of manufacture. Clearly marked with "Best Before" date.
Storage conditions- Store in cool, dry hygienic environment (<20°C)			

5.2 Opened	
Shelf Life	7 days
Storage conditions	Store in hygienic chill

5.3 Freeze Thaw Stability
Freeze thaw stable in application only, not in pack.

5.4 Recommended Make Up Instructions/Use
See product label and/or Technical Information Sheet. Available from customer services at c.service@macphie.com

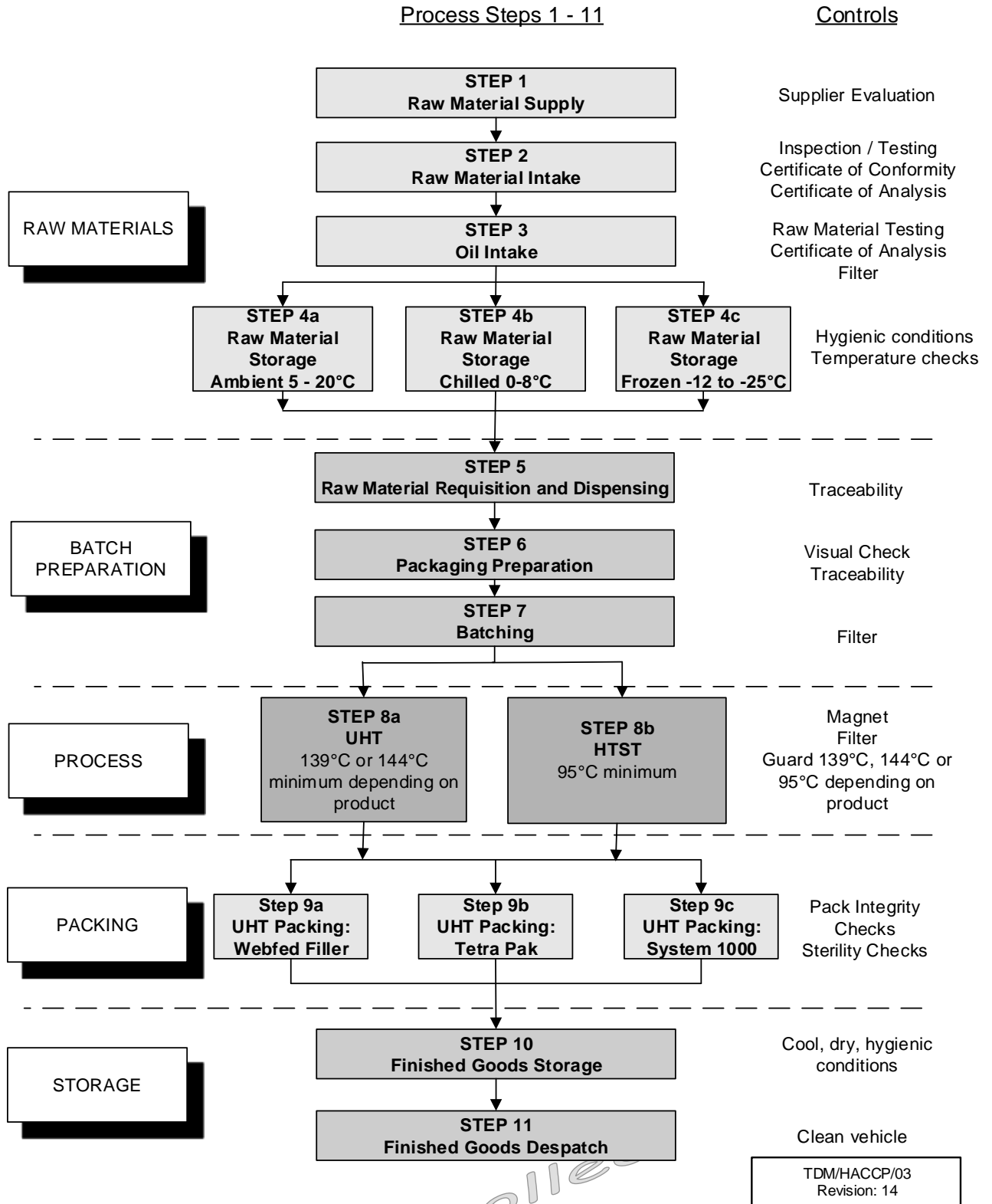
6. FOOD SAFETY DATA

6.1 Microbiological (typical)

Free from all viable micro-organisms until opened

Uncontrolled
COPY

7. HACCP FLOW CHART



Uncontrolled COPY

8. PACKAGING

<u>Packaging</u>			
8.1	<u>Pack Size:</u>	12 x 1Lt Tray	
		Specification	
	Primary pack	Aluminium/paper/PE laminate Product label: Adhesive vinyl coated paper	Weights(Kg) 0.026
	Secondary Pack	B Flute corrugated erect tray, Label: Adhesive paper label, Shrink-wrap: LDPE/LLDPE laminate	0.116
	Tertiary Pack	Pallet cover polythene	0.064
		Pallet Stretch wrap: polyethylene	0.45
		Pallet Layer Board-paper	0.397
		Pallet corner protectors	0.051
	Pallet	27	
8.2	<u>Sealing</u>	Heat sealed tetra	
8.3	<u>Dimensions of Unit</u> (length x width x height)	208mm x 402mm x 170mm	
8.4	<u>Palletisation</u> (dimensions of pallet)		
	Pallet Configuration	15 Trays/layer x 5 layers=75 units/pallet	
	Dimensions of pallet	1200mm x 1000mm	
8.5	<u>Labelling</u>	Each pack is labelled with product name, product weight (average weight), "Best Before" date (DD/MM/YYYY), 4 digit Quality Control number (Y,D,D,D), and time of packing (00:00) Each tray is coded with Best Before date and sequential tray number.	

<u>Packaging</u>			
8.1	<u>Pack Size:</u>	10Ltr Red bag-in-box	
		Specification	
	Primary pack	2 ply metallised film/LLPDE liner	Weights(Kg) 0.079
	Secondary Pack	C flute corrugated box, Adhesive paper label. Shrink-wrap: LDPE/LLDPE laminate	0.186
	Tertiary Pack	Pallet cover polythene	0.064
		Pallet Stretch wrap: polyethylene	0.45
		Pallet Layer board-paper	0.397
		Pallet	27
8.2	<u>Sealing</u>	heat Sealed	
8.3	<u>Dimensions of Unit</u> (length x width x height)	170mm x 212mm x 332mm	
8.4	<u>Palletisation</u> (and dimensions of pallet)		
	Pallet Configuration	28 boxes x 3 layers= 84 units / pallet	
	Dimensions of pallet	1200mm x 1000mm	
8.5	<u>Labelling</u>	Each pack is labelled with product name, product weight (average weight), "Best Before" date (DD/MM/YY), 4 digit Quality Control number (Y,D,D,D), and time of packing (00:00) Each tray is coded with Best Before date and sequential tray number.	

MSDS

1. PRODUCT & COMPANY IDENTIFICATION		
1.1	Product name	MACTOP EXTRA
1.2	Product Code	GP136
1.3	Description	A sweetened cream alternative made with vegetable oil and milk protein.
1.4	Manufacturers Name, Address & tel no.	Macphie of Glenbervie, Glenbervie, Stonehaven AB39 3YG. Tel: 01569 740641
2. COMPOSITION/INFORMATION ON INGREDIENTS		
2.1	Contains	See section 2 of main document
3. HAZARD IDENTIFICATION		
Contains substances, which may cause contact sensitisation, allergic or irritant response. Prolonged skin contact may cause contact dermatitis and/or minor irritation.		
4. FIRST AID MEASURES		
4.1	Inhalation	Not applicable.
4.2	Ingestion	Not applicable.
4.3	Skin contact	Wash off with soapy water. If skin irritation develops seek medical advice.
4.4	Eye contact	Rinse immediately with plenty of water. If irritation persists seek medical advice.
5. FIRE/EXPLOSION HAZARD		
5.1	Suitable fire extinguishing media	Water, Foam, Dry Chemical, Carbon Dioxide
5.2	Protection against fire	Good housekeeping to avoid the accumulation of spillages.
6. ACCIDENTAL RELEASE MEASURES		
6.1	Methods of cleaning/absorption	Absorb spillages with a suitable material.
6.2	Personal precautions	See section 8. Exposure controls/personal protection
6.3	Environmental precautions	The method of disposal should be in accordance with current local authority regulations.
7. HANDLING AND STORAGE		
7.1	Handling	Keep working area free from accumulated spillages.
7.2	Storage	Store in original packaging. Keep cool and dry and ensure product is stored in accordance with Food Safety Act.
8. EXPOSURE CONTROLS/PERSONAL PROTECTION		
8.1	General Precautions	a) Handle in accordance with good occupational hygiene and safety practices. Avoid contact with skin and eyes. b) Change work practices to minimise spillages. <ul style="list-style-type: none"> • Improve care and attention to the prevention of spillages. • Avoid damage to packaging to prevent leaks.
8.2	Ventilation	In accordance with LEV requirements as defined in COSHH 2002(as amended) legislation.
8.3	Respiratory Protection	Not required under normal conditions.
8.4	Eye Protection	Safety goggles as required.
8.5	Skin Protection	Standard protective clothing (including gloves) and appropriate skin protection if required.

Uncontrolled COPY

9.	PHYSICAL & CHEMICAL PROPERTIES	
9.1	Form	Liquid
9.2	Colour	Refer to section 1 of main document
9.3	Odour	Characteristic
9.4	Flammability	Product is not combustible.

10.	STABILITY & REACTIVITY	
	This material is stable under normal conditions of use.	
10.1	Conditions to avoid	None
10.2	Materials to avoid	None
10.3	Hazardous decomposition products	None

11.	TOXICOLOGICAL INFORMATION	
11.1	Inhalation	Not applicable.
11.2	Eye Irritation	Contact with eyes may cause irritation.
11.3	Skin Irritation	Prolonged and/or frequent contact may cause irritation and dermatitis
11.4	Ingestion	Not applicable.

12.	ECOLOGICAL INFORMATION	
	The product should not be allowed to enter any watercourse.	

13.	DISPOSAL CONSIDERATIONS	
	Product not believed to be dangerous to the environment and so no special disposal method is required. However, the method of disposal should be in accordance with current local authority regulations.	

14.	TRANSPORT INFORMATION	
14.1	UN No.	N/A
14.2	Sea	N/A
14.3	Road/Rail	N/A
14.4	Air	N/A

15.	REGULATORY INFORMATION	
	Classification not required.	

16.	OTHER INFORMATION	
	Under the 2002 COSHH regulations (as amended) you are reminded that the user is under legal obligation to carry out a suitable and sufficient assessment as to the risks to health which this material may present under its actual condition of use.	

The information contained throughout the document was correct at the time of publishing.

Uncontrolled
 COPY